

THE GIGRIG.COM



HUMDINGER V2 MANUAL

TheGigRig HUMDINGER is an active splitter with a buffered output (Out 1), and a buffered, isolated, phase reversible output (Out 2).

HUMDINGER

INPUT: Plug in here

POWER: Uses a standard 9V DC 2.1mm centre negative power supply @100mA

OUT 1: This is the normal straight through output and includes the ground/earth

OUT 2 ISOLATED: This is the output that gives the option of isolation and reversing the relative phase to output 1

OUT 2 PHASE: Flips the phase on output 2

EARTH LIFT: Enables you to lift the earth on output 2



In Operation

Connect a standard 9v DC centre negative 2.1mm plug power supply that can deliver at least 150mA.

Connect your guitar/bass signal to the INPUT. Connect outputs 1&2 to wherever you need them to go (see example diagrams).

PLEASE NOTE – Output 1 is your main earth/ground connection so ensure this is always connected.

PHASE:

Out 2 features a phase switch. This will reverse the phase on Out 2 relative to the phase on Out 1. With both amps on, toggle the phase switch to see which position has more bottom end and volume. The position that has more bottom end will mean both amplifiers are in phase.

EARTH LIFT:

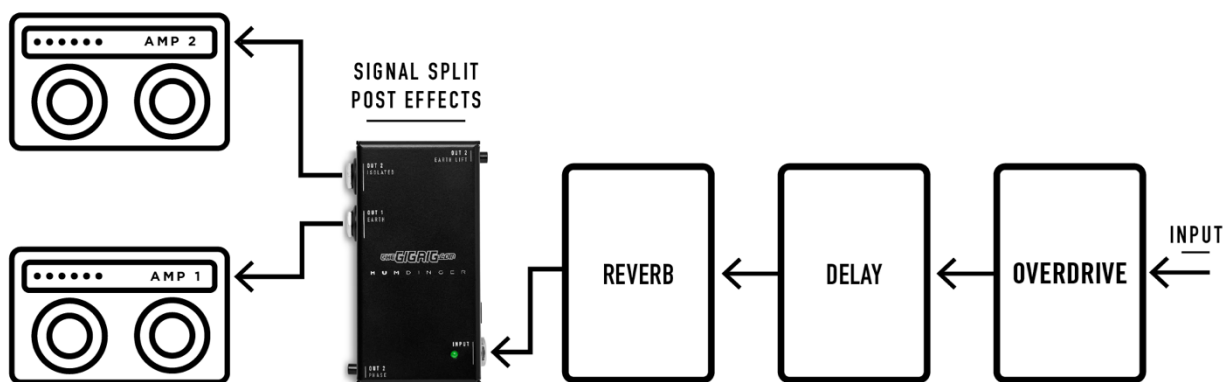
Out 2 features an earth lift switch. With this button pushed in, your signal earth is connected through Out 2. With this button disengaged (button out), your earth/ground is lifted. This results in isolation between Out 1 and Out 2 and will remove any earth loop noise you get from connecting two amplifiers together.

PLEASE NOTE: Out 2 is an exact mirrored image of Out 1. The phase switch works regardless of the configuration of the earth lift button.

Set Up Examples

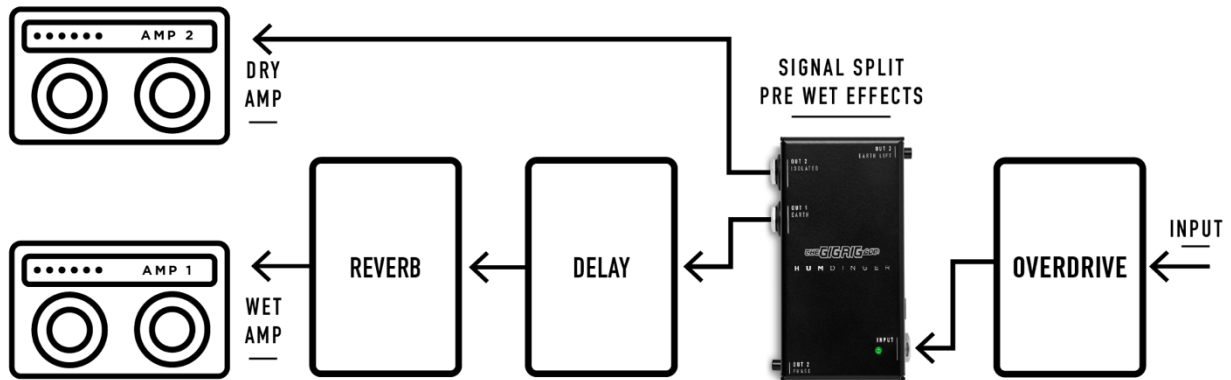
END OF CHAIN SPLITTING:

The most common way to set up the HumDinger is to position it at the very end of your signal chain, enabling you to split your signal between 2 different amps. You can also send your Out 1 to your amp and the isolated output to your DAW for re-amping later.



TPS WET/DRY:

The Humdinger’s separate outputs can be used to split the signal path. An example of this is a TPS WET/DRY. In the diagram below the signal is split after the gain stages; the Out 2 ISOLATED output is sent to your dry amp and the Out 1 BUFFERED output is sent to your wet effects (delay, reverb, etc.) then to your wet effects amp. It’s a great way to get faux stereo sounds from what is essentially a dual mono signal path. From here, a *Wet/Dry/Wet* set up is as easy as connecting the wet side in stereo and having the dry amp in the centre.



Technical Specifications:

- Supply Voltage: 9V DC
- Supply Current: Max = 100mA at 9V
- Input Signal Levels: +/- 17V (34V headroom peak to peak)
- Input impedance 680K Ohm (DC Coupled)

Output A Buffered:

- Low Noise: 3nV/√Hz
- Output impedance 100 Ohm
- Frequency response: 5Hz to 100Khz, into 1M Ohm

Output B Isolated:

- Low Noise: 3nV/√Hz
- Output impedance 100 Ohm
- Frequency response at guitar levels 5Hz to 100KHz

Thank You

By buying this GigRig product you are supporting a small team of ridiculously talented engineers, tech advisers, production heroes, admin legends and their families. If you need anything, please contact us through our support page at thegigrig.com/support and don't forget to check out our YouTube channel for more info.

Warranty:

The GigRig warrants the product to be free from defects in material and workmanship for a period of 2 years from the original date of purchase. If the product fails within the warranty period, The GigRig will repair or, at our discretion, replace the product and cover the cost of return shipping to the original purchaser. This warranty covers defects in manufacturing discovered while using this product as recommended by The GigRig. This warranty does not cover loss or theft, nor does the coverage extend to damage caused by misuse, abuse, unauthorized modification, improper storage, lightning, or natural disasters. Damage caused by any of the above circumstances may result in a non-warranty repair fee.

Legal:

In the case of malfunction, the purchaser’s sole recourse shall be repair or replacement, as described in the preceding paragraphs. The GigRig will not be held liable to any party for damages that result from the failure of this product. Damages excluded include, but are not limited to, the following: lost profits, lost savings, damage to other equipment, and incidental or consequential damages arising from the use, or inability to use this product. In no event will The GigRig be liable for more than the amount of the purchase price, not to exceed the current retail price of the product. The GigRig disclaims any other warranties, express or implied. By using the product, the user accepts all terms herein.

Disposal:

Return the unit to The GigRig Ltd for disposal or use standard disposal for electrical equipment recommended in your country

CE Approved. Fully compliant with the RoHSv standard.

